

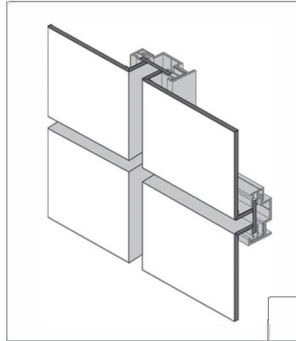
ALPOLIC®

METAL COMPOSITE MATERIALS

MITSUBISHI CHEMICAL COMPOSITES AMERICA, INC.

natural metals – zinc

ALPOLIC®/frZinc Metal Composite Material finish offers yet another unique and appealing look in our Natural Metals Series. The QUARTZ-ZINC® finish by VMZINC®, the world's leading brand for architectural zinc, is a real zinc skin with a pre-weathered grey finish that closely matches the color of zinc's natural patina making it ideal for both interior and exterior applications.



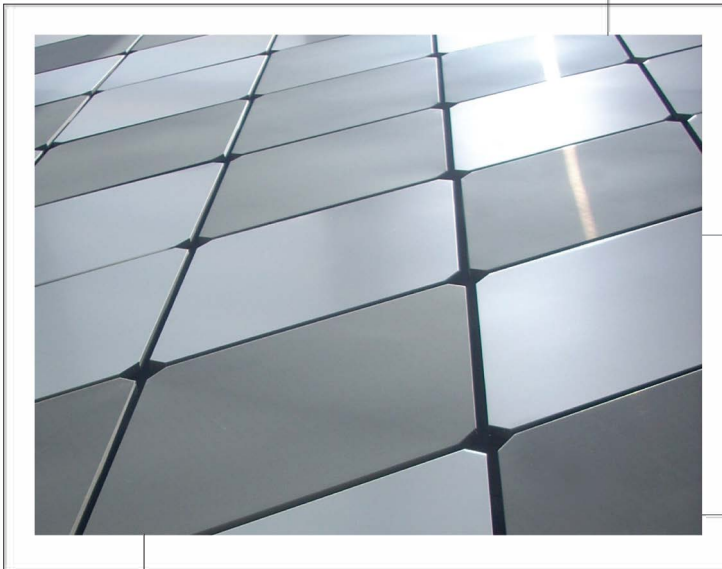
CONSTRUCTION INFORMATION

PROJECT: Annette Strauss

LOCATION: Dallas, TX

PRODUCT: ALPOLIC® QUARTZ-ZINC® by

VMZINC® & OPT Mica Platinum



GENERAL INFORMATION

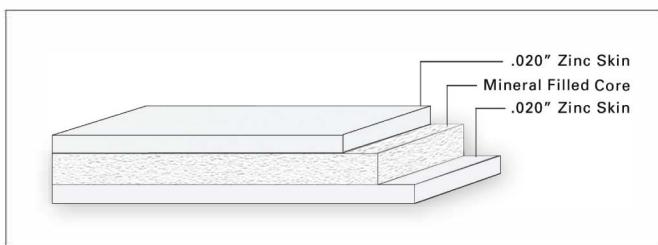
The ALPOLIC®/frNatural Metals Series lets you incorporate the look and durability of zinc and other genuine metals into your structure at a fraction of the weight, with the added benefit of a fire-resistant core.



ZINC-QUARTZ
4-AZZ

SURFACE TREATMENT

ALPOLIC®/fr Zinc Composite Material (ZCM) is a sandwiched panel comprised of two pre-weathered grey layers of QUARTZ-ZINC® metal by VMZINC® and a fire resistant core. The QUARTZ-ZINC® color is a factory induced patina that looks very close to the patina that would naturally form. By using QUARTZ-ZINC® you ensure that parts of the buildings that have different exposure to the elements maintain the same color.



STANDARD PANEL SIZE

Standard stock is 38" x 146" (965mm x 3708mm) in 40 piece crates. Custom lengths and thickness available. Please contact ALPOLIC® Customer Service for current available stock and additional information.

FINISH TOLERANCE

Finish color variations in natural metals are to be expected, however the VMZINC® Y factor (gray scale) on the QUARTZ-ZINC® should be between 22 and 25. For more information on QUARTZ-ZINC® finishes please go to www.vmpzinc-us.com.

PRODUCT TOLERANCE:

Width:	± 0.08" (2mm)
Length:	± 0.16" (4mm)
Thickness:	4mm: ± 0.008" (0.2mm)
Bow:	maximum 0.5% of length and/or width
Squareness:	maximum 0.2" (5mm)
Peel Strength:	>22 in lb/in (ASTM D17181)

ALPOLIC® material is trimmed and squared with cut edges to offer the best panel edge conditions in the industry.

FIRE PERFORMANCE

Fire resistant ALPOLIC®/fr Natural Metal Zinc panels with a mineral filled core have been tested by independent testing laboratories using nationally recognized tests.

This material meets all requirements for noncombustible construction as detailed in section 1407 of the International Building Code (IBC 2009).

Please call technical support for additional information.

WARRANTY

Standard panel warranty: 10 Years
Finish warranty: Not Applicable
Call ALPOLIC® Customer service for exclusions and warranty details.

PRODUCT NOTES

- Zinc needs to be isolated from aluminum and other dissimilar metals to avoid galvanic corrosion.
- Panels should be stored flat in a dry, indoor environment.
- Protective film should be removed from panels soon after installation.
- Please refer to ZCM Fabrication Manual for routing and fabrication recommendations.
- Crating fees apply to orders for less than standard piece crate.
- ALPOLIC® an VMZINC® does not endorse, recommend or support the use of bimetallic composites due to differing rates of thermal expansion of dissimilar metals.
- ZCM should only be installed using a rain screen system.

FOR TECHNICAL INFORMATION, PLEASE CALL

1.800.422.7270

U.S. HEADQUARTERS

MITSUBISHI CHEMICAL COMPOSITES AMERICA, INC.

401 Volvo Parkway, Chesapeake, VA 23320
Telephone: 800-422-7270, Facsimile: 757-436-1896
www.alpolic-americas.com e-mail: info@alpolic.com