

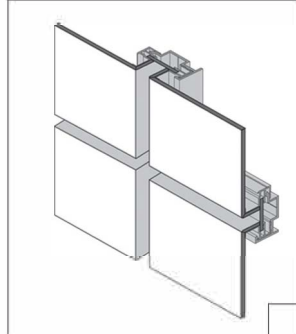
ALPOLIC®

METAL COMPOSITE MATERIALS

MITSUBISHI CHEMICAL COMPOSITES AMERICA, INC.

natural metals – stainless & titanium

ALPOLIC®/fr Stainless Composite Material features stainless steel metal skins and the Titanium Composite Material provides a Titanium metal surface skin. Both materials are designed for new building and retrofit applications and radiate an air of high-tech sophistication, creating a look that speaks volumes about stability, longevity, and quality.



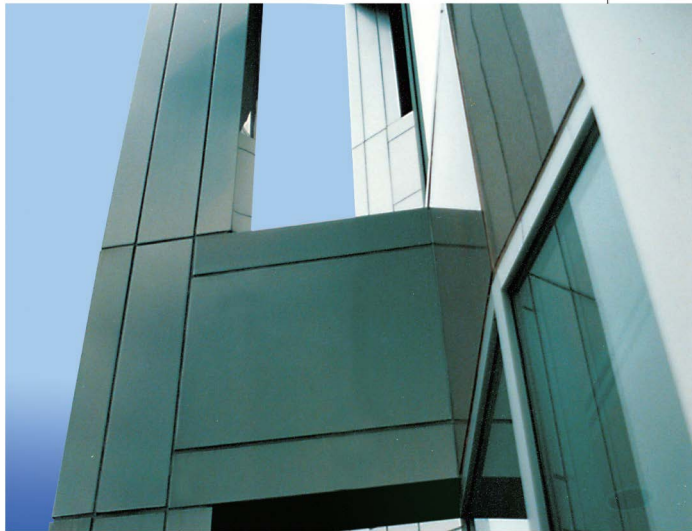
CONSTRUCTION INFORMATION

PROJECT: Sudbury Cancer Center

LOCATION: Canada

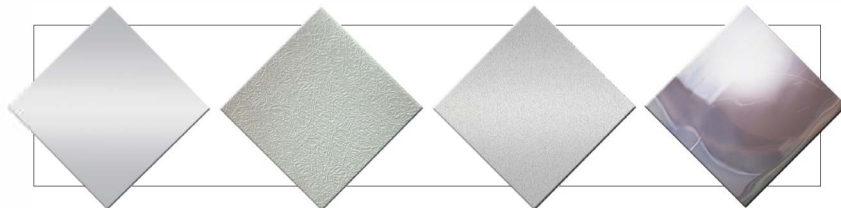
ARCHITECT: Healthcare Consultants

PRODUCT: ALPOLIC® Stainless Hairline



GENERAL INFORMATION

The ALPOLIC® Natural Metals Series is simply dazzling in both appearance and performance, featuring a beautiful traditional look in a truly state-of-the-art panel system. Each 4mm metal panel is stocked in a mineral filled fire resistant core and available for immediate shipment.



STAINLESS-HAIRLINE
4-84HL

TITANIUM
4-80TI

STAINLESS-DULL
4-8DUL
(Custom Finish)

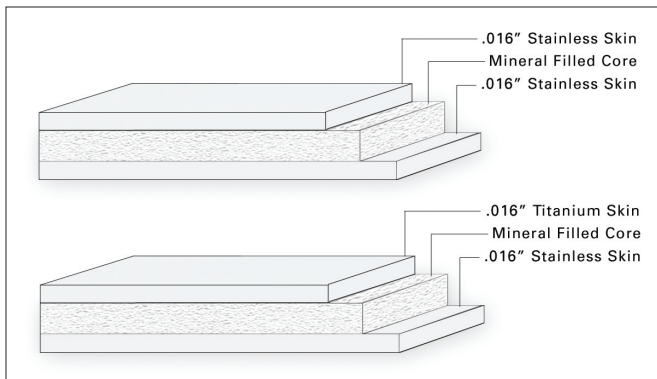
STAINLESS-POLISHED
4-88PL
(Custom Finish)

ALPOLIC®/fr stainless & titanium

INTERIOR AND EXTERIOR SURFACING
INTERIOR AND EXTERIOR SIGNAGE

SURFACE TREATMENT

ALPOLIC®/fr Stainless Composite Materials (SCM) and Titanium Composite Materials (TCM) are created by sandwiching the desired natural metal skin for the top and a stainless steel skin for the bottom with a fire resistant mineral filled core. The stocked Stainless-Hairline is a mechanically brushed finish. Custom Stainless-Dull and Stainless-Polished finishes are available.



STANDARD PANEL SIZE

Standard stock is 39.4" x 146" (1000mm x 3708mm) for Stainless-Hairline and 48" x 146" (1219mm x 3708mm) for Titanium. Minimum quantities apply for custom sizes and finishes, please contact ALPOLIC® Customer Service for details and for current available stock.

FINISH TOLERANCE

Finish color of natural metal cannot be controlled and some variation should be expected.

PRODUCT TOLERANCE

Width:	± 0.08" (2mm)
Length:	± 0.16" (4mm)
Thickness:	4mm: ± 0.008" (0.2mm) 6mm: ± 0.012" (0.3mm)
Bow:	maximum 0.5% of length and/or width
Squareness:	maximum 0.2" (5mm)
Peel Strength:	>22 in lb/in (ASTM D1781)

ALPOLIC® material is trimmed and squared with cut edges to offer the best panel edge conditions in the industry.

WARRANTY

Standard panel warranty: 10 Year
Finish warranty: Not Applicable
Call ALPOLIC® Customer Service for exclusions and warranty details.

PRODUCT NOTES

- Panels should be stored flat in a dry, indoor environment.
- Fabricate panels at temperatures above 55°F.
- Protective film should be removed from panels soon after installation.
- Please refer to ALPOLIC®/fr SCM/TCM Fabrication Manual for routing and fabrication recommendations.
- Crating fees apply to orders for less than standard piece crate.
- Please note that SCM and TCM materials as indicated in ALPOLIC®/fr SCM/TCM Fabrication Manual require reduced router speeds to process due to the physical properties of the metals.

FOR TECHNICAL INFORMATION, PLEASE
CALL 1.800.422.7270

U.S. HEADQUARTERS

MITSUBISHI CHEMICAL COMPOSITES AMERICA, INC.

401 Volvo Parkway, Chesapeake, VA 23320

Telephone: 800-422-7270, Facsimile: 757-436-1896

www.alpolic-americas.com e-mail: info@alpolic.com