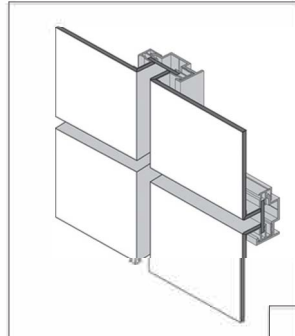


ALPOLIC®

natural metals – stainless & titanium

ALPOLIC®/fr Stainless Composite Material features stainless steel metal skins and the Titanium Composite Material provides a Titanium metal surface skin. Both materials are designed for new building and retrofit applications and radiate an air of high-tech sophistication, creating a look that speaks volumes about stability, longevity, and quality.



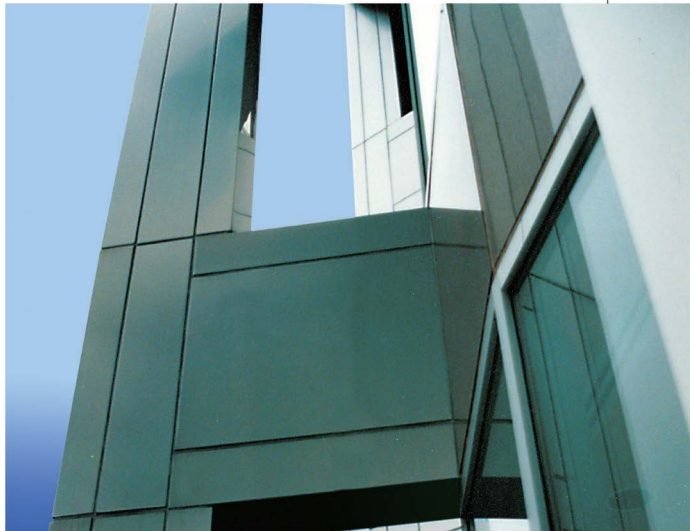
CONSTRUCTION INFORMATION

PROJECT: Sudbury Cancer Center

LOCATION: Canada

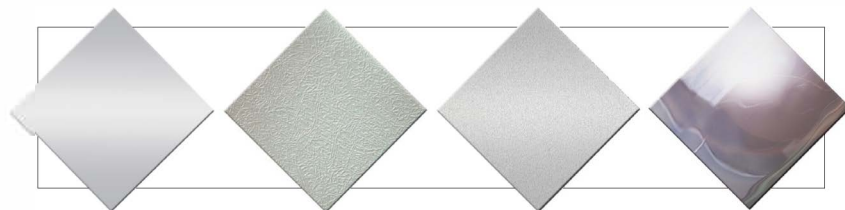
ARCHITECT: Healthcare Consultants

PRODUCT: ALPOLIC® Stainless Hairline



GENERAL INFORMATION

The ALPOLIC® Natural Metals Series is simply dazzling in both appearance and performance, featuring a beautiful traditional look in a truly state-of-the-art panel system. Each 4mm metal panel is stocked in a mineral filled fire resistant core and available for immediate shipment.



STAINLESS-HAIRLINE
4-84HL

TITANIUM
4-80TI

STAINLESS-DULL
4-8DUL
(Custom Finish)

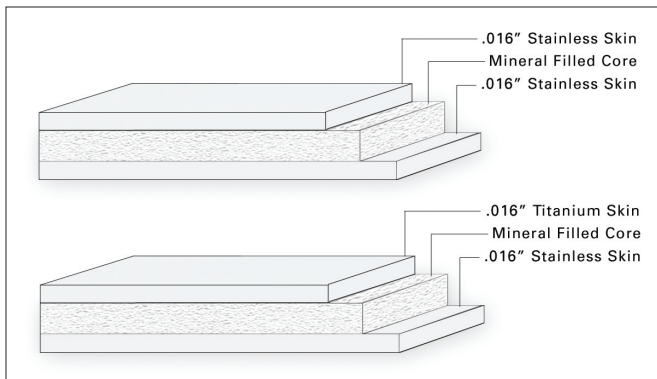
STAINLESS-POLISHED
4-88PL
(Custom Finish)

ALPOLIC®/fr stainless & titanium

INTERIOR AND EXTERIOR SURFACING
INTERIOR AND EXTERIOR SIGNAGE

SURFACE TREATMENT

ALPOLIC®/fr Stainless Composite Materials (SCM) and Titanium Composite Materials (TCM) are created by sandwiching the desired natural metal skin for the top and a stainless steel skin for the bottom with a fire resistant mineral filled core. The stocked Stainless-Hairline is a mechanically brushed finish. Custom Stainless-Dull and Stainless-Polished finishes are available.



STANDARD PANEL SIZE

Standard stock is 39.4" x 146" (1000mm x 3708mm) for Stainless-Hairline and 48" x 146" (1219mm x 3708mm) for Titanium. Minimum quantities apply for custom sizes and finishes, please contact ALPOLIC® Customer Service for details and for current available stock.

FINISH TOLERANCE

Finish color of natural metal cannot be controlled and some variation should be expected.

PRODUCT TOLERANCE

| | |
|----------------|--|
| Width: | ± 0.08" (2mm) |
| Length: | ± 0.16" (4mm) |
| Thickness: | 4mm: ± 0.008" (0.2mm) 6mm: ± 0.012" (0.3mm) |
| Bow: | maximum 0.5% of length and/or width |
| Squareness: | maximum 0.2" (5mm) |
| Peel Strength: | >22 in lb/in (ASTM D1781) |

ALPOLIC® material is trimmed and squared with cut edges to offer the best panel edge conditions in the industry.

WARRANTY

Standard panel warranty: 10 Year
Finish warranty: Not Applicable
Call ALPOLIC® Customer Service for exclusions and warranty details.

PRODUCT NOTES

- Panels should be stored flat in a dry, indoor environment.
- Fabricate panels at temperatures above 55°F.
- Protective film should be removed from panels soon after installation.
- Please refer to ALPOLIC®/fr SCM/TCM Fabrication Manual for routing and fabrication recommendations.
- Crating fees apply to orders for less than standard piece crate.
- Please note that SCM and TCM materials as indicated in ALPOLIC®/fr SCM/TCM Fabrication Manual require reduced router speeds to process due to the physical properties of the metals.

FOR TECHNICAL INFORMATION, PLEASE
CALL 1.800.422.7270

ALPOLIC®

401 Volvo Parkway, Chesapeake, VA 23320
Telephone: 800-422-7270, Facsimile: 757-436-1896
www.alpolic-americas.com e-mail: info@alpolic.com